



GIC represents a group of companies dedicated to the automotive business, with a consolidated turnover of 135 million euro generated within the industry and 2000 employees .

With more than 40 years of experience, today GIC has an optimized organizational structure driven forward by customer requirements and technological innovation within the 3 sectors we specialize in:

THERMOPLASTICS & RUBBER PROCESSING

METAL PROCESSING

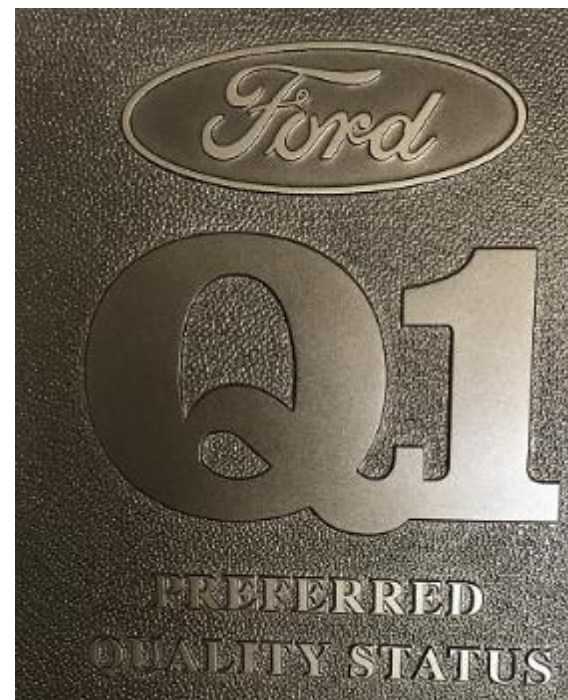
SYSTEMS & ASSEMBLIES

Quality

QUALITY MANAGEMENT SYSTEM



Certified by DQS against
ISO 9001:2015
IATF 16949:2016
Reg. No.297013 IATF 16



Group divisions overview

PLASTICS & RUBBER	METAL	SYSTEMS & ASSEMBLIES
-------------------	-------	----------------------

Turnover: 45 Mil €
Headcount: 670

Turnover: 80 Mil €
Headcount: 950

Turnover: 10 Mil €
Headcount: 370

Companies:

Pitesti, Romania
 Casablanca, Maroc

Stefanesti, Romania

Brasov, Romania

Companies:

Brad, Romania

Costesti, Romania

Curtea de Arges, Romania

Brasov, Romania

Companies:

Campulung, Romania

Pitesti, Romania

Pitesti, Romania

Pitesti, Romania



Mission

Become a key partner to our OEM and TIER1 customers by providing solid performance in:
**QUALITY, COST, PRODUCTION FLEXIBILITY, PRODUCT CO-DEVELOPMENT,
SMART PROCESS ENGINEERING, INNOVATION & PROJECT MANAGEMENT.**

Strategy

- 1. Continue focusing on the automotive sector.*
- 2. Constant optimisation in terms of production process & companies organisation set up.*
- 3. Expanding the services provided to customers by integrating product development / co-development and project management.*
- 4. Maintain a coherent diversification of “in-house technologies” that generates synergies in terms of product/system engineering as well as critical size target achievement.*

THERMOPLASTICS PROCESSING

 **Subansamble Auto**

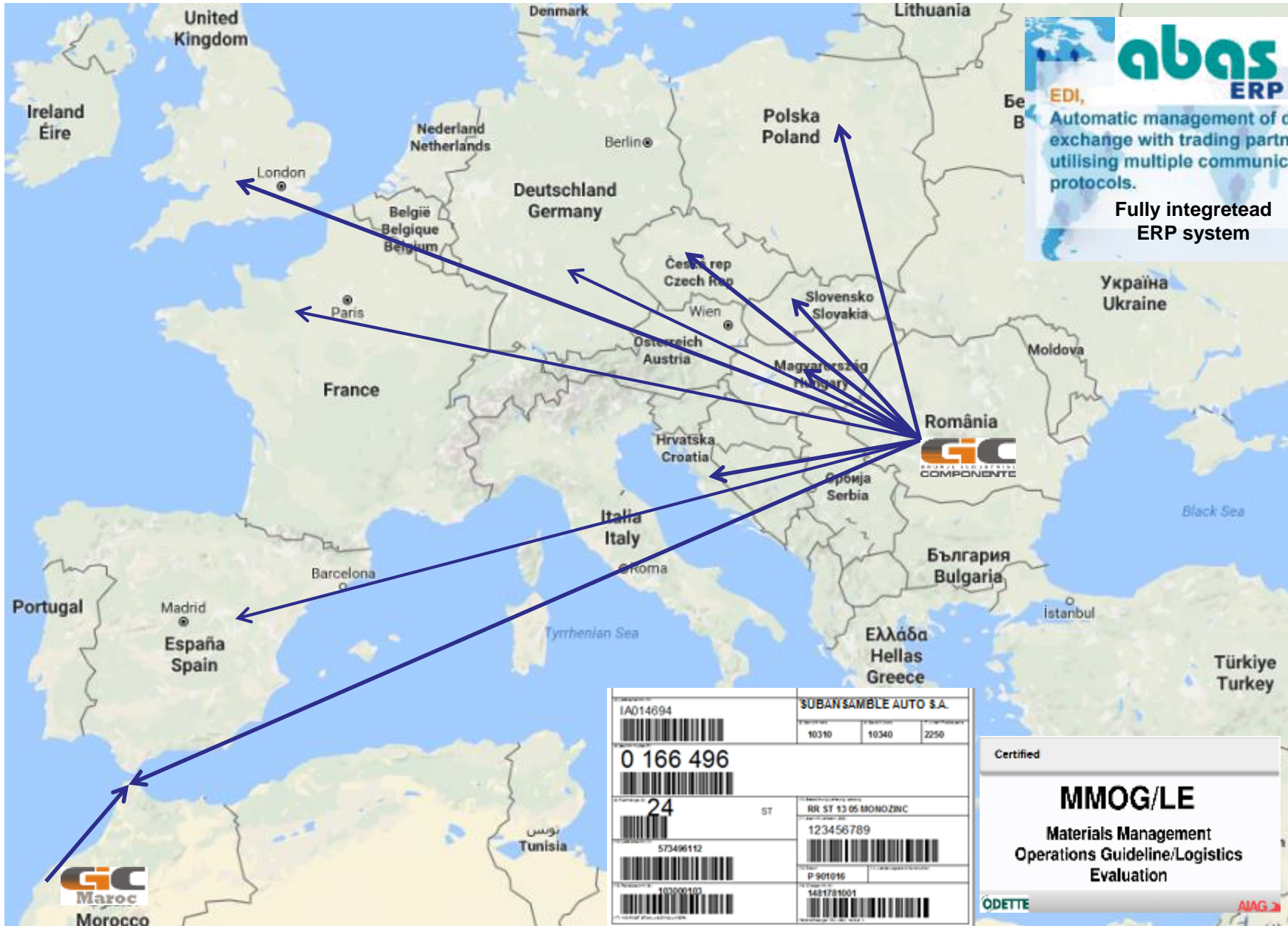
Pitesti, ROMANIA

GIC
Maroc

Casablanca, MOROCCO



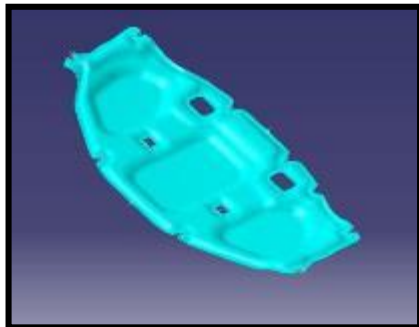
Logistics & Footprint



GALIA / VDA Bar code labeling system

GENERAL TECHNOLOGIES OVERVIEW

1. *Plastics Injection moulding, including 2K injection, over moulding, gas injection, welding, punching and assembling, tamper-printing.*
2. *Solid & Foamed Blow moulding including welding and assembling*
3. *Thermo compression*
4. *Polyurethane injection moulding*





Pitesti, ROMANIA



Facility surface: 14.000sqm



Casablanca, MOROCCO



Facility surface: 7.500 sqm



Pitesti, ROMANIA



& QAPIMAR
Casablanca, MOROCCO

Plastic Injection presses range :

66 presses from 40T up to 1500T Clamping force

- Standard 1K presses
- Vertical insert presses
- 2K presses

Blow molding machines:

13 Blow-molders from 5L to 120L

- Accumulating head
- Continuous extrusion

Finishing & assembling:

- Cutting and punching
- Hot plate & ultrasonic welding
- Tampon printing

PU Injection:

- 7 PU high pressure injection machines

Facility surface: 14.000sqm

Injection presses range :

12 presses from 60T up to 850T Clamping force

- Standard 1K presses

Blow molding machines:

1 Blow-molder 50 L Accumulating head

Finishing & assembling:

- Cutting and punching
- Tampon printing

Facility surface: 5.500 sqm

 **Subansamble Auto**

Pitesti, ROMANIA

Injection product families: visible interior and exterior parts, assemblies, over molding



B515 Interior Hard Trim



 **Subansamble Auto**

Pitesti, ROMANIA



B479 & B515 *Seat Components*

Subansamble Auto

Pitesti, ROMANIA

Blow molded product families: liquids reservoirs, cockpit and engine air ducts, welded and assembled parts



 **Subansamble Auto**

Pitesti, ROMANIA

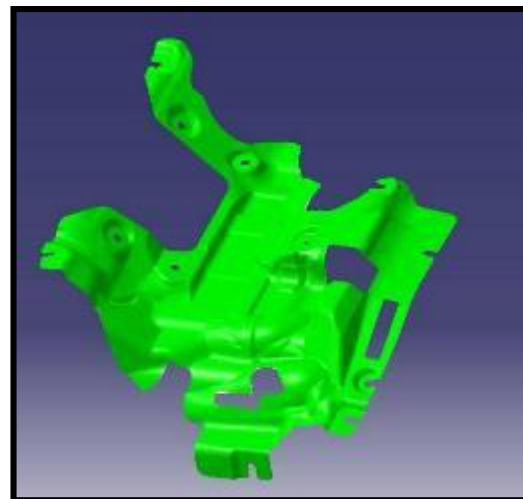
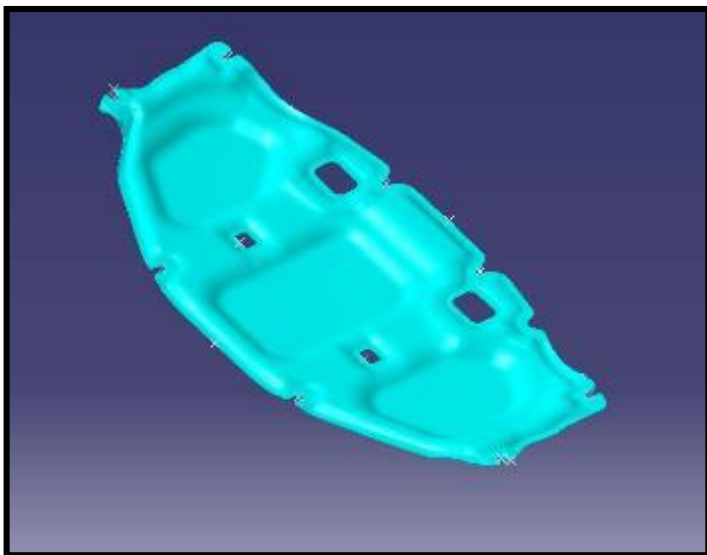


B515 *Air Ducts*

THERMO COMPRESSION

Engine compartment insulation

- dash sound deadeners
- engine sound deadeners



POLYURETHANE MOULDING

Automotive seating systems and accessories

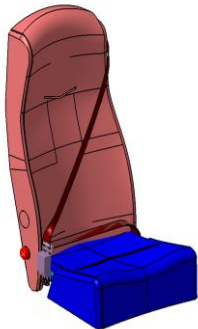
- small and medium series automotive fully equipped seats (electrical cars, armoured vehicles, ambulances)
- armrests foam pads, headrests PU over moulded

Sound insulation systems

- flexible PU foaming for body/cockpit sound insulation solutions
- high density PU foaming (integral skin) for noise management applications

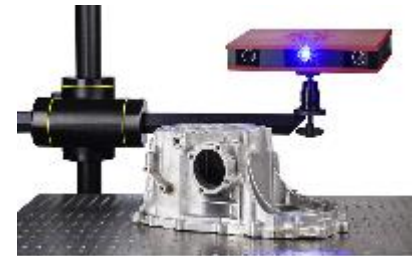


7 Krauss-Maffei polyurethane injection machines



Fully equipped seating system delivered to Mia- Electric

Testing and Validation Laboratories / Validations



Equipments

- 3D CMMs & Mobile arms with scanning capabilities
- 3D Scanning & inspection camera
- Tensile testing machines
- Light chambers, colorimeters & gloss meters

- Climatic chambers
- Salt spray test chambers
- Metal micrographic analysis
- X Ray etc

Engineering support

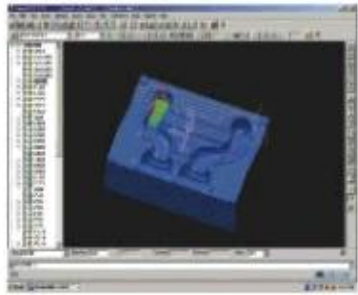


Tools maintenance

- CNC Milling centers
- Spark electro erosion
- Wire electro erosion
- Micro welding
- Laser welding



Project management and product co development



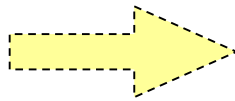
Tooling design validation



Prototypes & serial parts production



Product co-development



Tooling production follow up



-Project management in line with automotive industry methods/tools (ANPQP, APQP, FMEA, SPC etc)

-Beside our own tool manufacturing shop, we have long-term cooperation with other Romanian, German, French, Italian, Portuguese and Chinese tool manufacturers

-Strong partnerships with raw material engineering companies (Dupont, Huntsman, Bayer etc) able to provide support in product development and industrialization

For all projects we are able to provide the validation tests (where the supplier is responsible) in our facilities or with external support agreed by the OEM's (Sercovam, Aitex, ADAC)

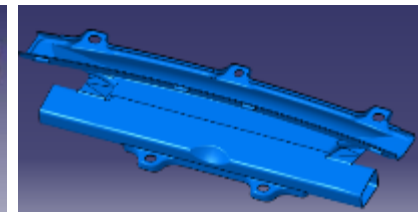
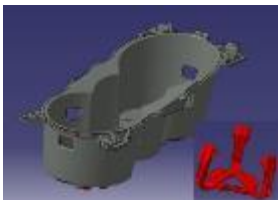
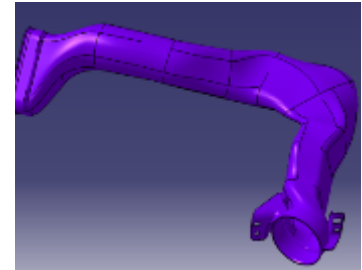
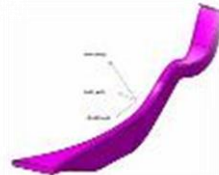
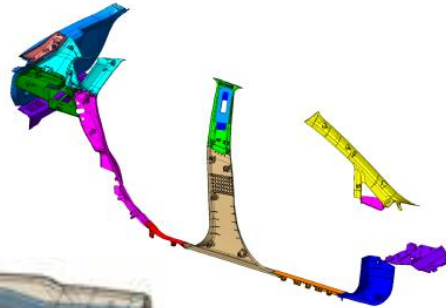


NEW PROGRAMS



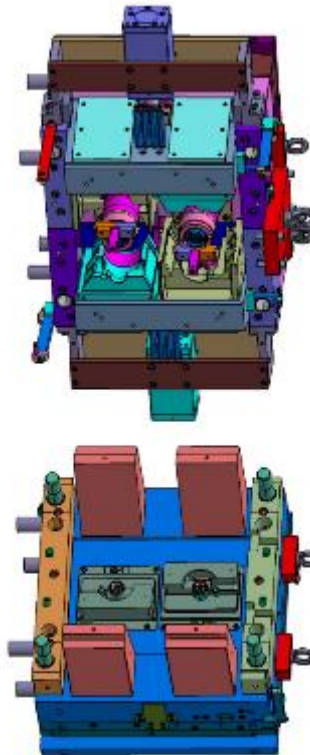
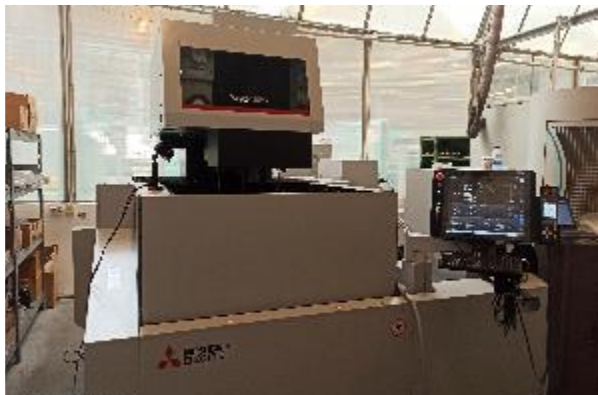
New business acquisition with SOP in the next 3 years::

- IP injected elements and blow molded air ducts
- Interior hard trimming
- Injected technical parts
- PU sound absorbers and insulators
- PU injected armrest pads and seat cushions



Tools Manufacturing

- CAD design CATIA & CIMATRON
- CNC 3 axes (Hartford, Deckel, Mas) 600x400 up to 2200x1200 8 pcs
- CNC 5 Axes (Deckel Maho, Hermle) 2 pcs
- CNC electrode milling (OPS Ingersoll) 1 pcs
- EDM OPS Ingersoll 400x300 up to 1600x1200 4 pcs
- WEDM (Mitsubishi) 1 pcs
- Spotting pres (Millutensil, Reiss) 2 pcs
- Max weight of tools 10T



RUBBER PROCESSING



EQUIPMENTS

2 extrusion lines,
1 extrusion line for silicone, profiles and tubes,
31 molding injection presses,
7 corner injection presses,
1 cooling & air-conditioning hoses lines,
2 mixing lines

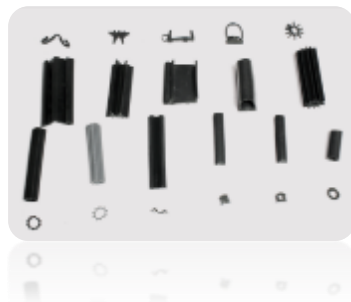


PRODUCTS

Elbows



Extruded profiles



Molded parts



METAL PROCESSING DIVISION

GIC NOSAG *metal*



Manufacturing Process

- *Wire Forming*
- *Tubes Processing (bending, flattening, punching, stamping, welding)*
- *Welding by resistance / pressure / metal adding (MAG)*
- *Stamping (63tf to 800tf).*
- *Surface coating operations*
(epoxy painting, zinc/ Zn-Nk plating, KTL, rilsan coating)

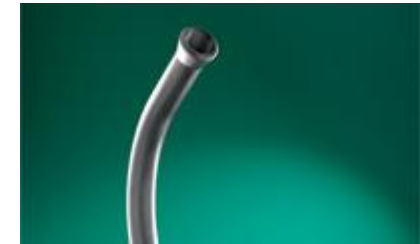
Wire forming



9 CNC Machines of the latest generation

- 7 WAFIOS machines Φ 2.5 - Φ 8
- 1 WAFIOS machine Φ 6-10;
- 1 BLM (2head) machine Φ 6-10;
- 1 GL machine Φ 2.5 - Φ 8

Tubes processing



- 6 CNC 3D Machine
- 5 Forming presses
- 2 Punching units with anvil
- 10 Drilling units



Welding

Manual and robotic welding ; MIG/MAG, pressure for steel ; TIG for aluminium



Stamping



- Range presses (63tf – 800tf)



Surface coating operations

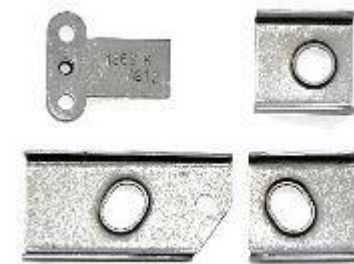


- **Painting in electrostatic field (epoxy powder);**
- **Zinc coating operations(Zn- Alkalin & Zn-Ni);**
- **Rilsan coating (hood holders)**
- **KTL**

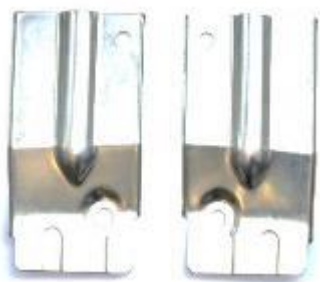
PRODUCTS: Trunk hinge, seat frames, hood holders, door rods ,HRI ,hooks



PRODUCTS: Stamping parts



PRODUCTS: Stamping parts



PRODUCTS: Assembled parts



PRODUCTS: Painted parts



• Spare wheel support B90,H79



• Back seats hooks, R90



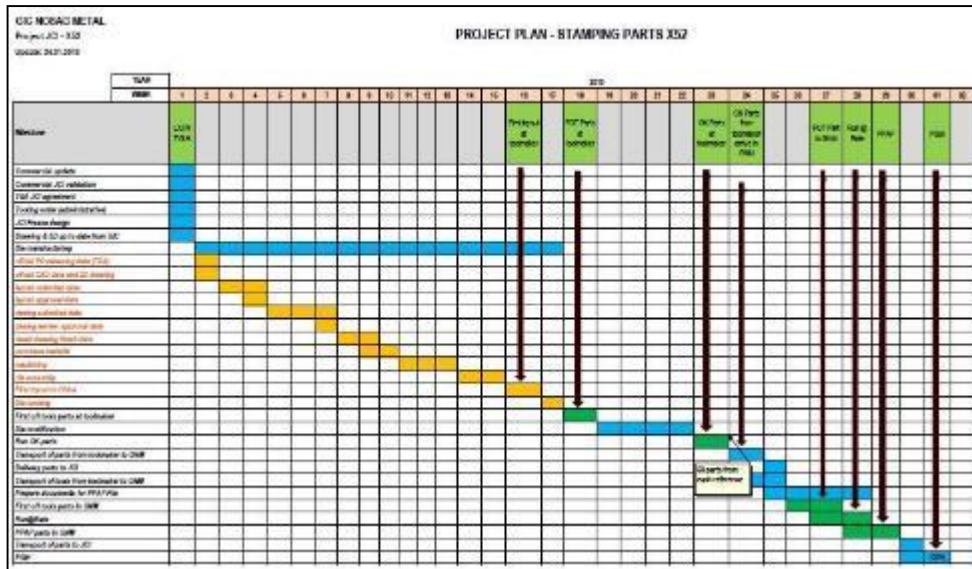
• Headrest inserts: L90, RF 90, LB1A



• Front seats swing bars, L90

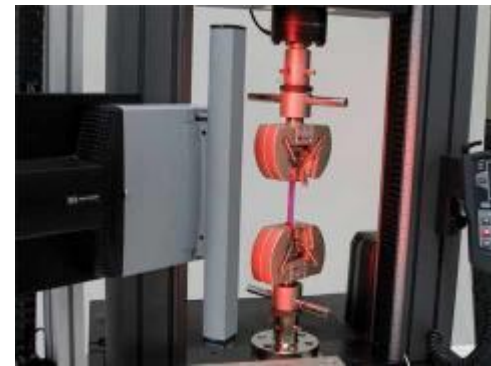
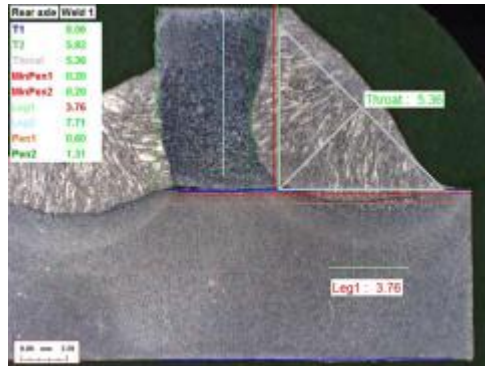
Project management

- Project management in line with automotive industry methods/tools (ANPQP, FMEA, SPC etc)
- Beside our own tool manufacturing shop, we have strong partnerships with Romanian, German, French, Italian, Portuguese and Chinese tool manufacturers



- PFMEA
- CONTROL PLAN
- PROJECT PLAN

Laboratories



- Welding macro graphic tests
- Welding destructives tests
- Ultrasonic precision measurement for thickness and thinning rate
- Tensile testing, hardness testing
- Chemical analysis
- Painting tests: adherence, thickness of coating
- Climatic chambers: humidity, heat, salt spray test



3D Measurement, validations.

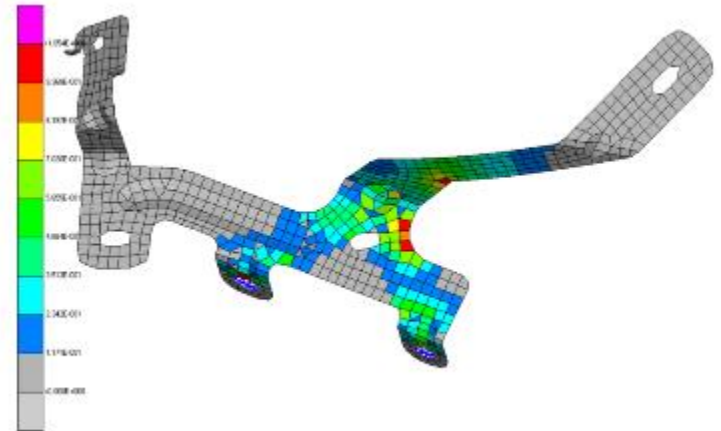
**3D ROMER
SIGMA**



3D CMMs & Mobile arms with scanning capabilities



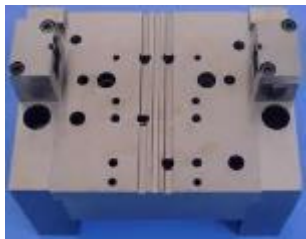
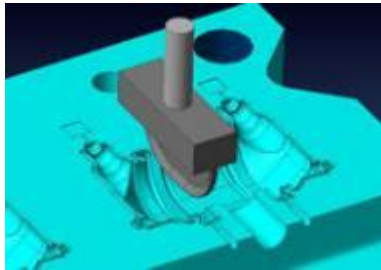
Vibration trials on 3D model



Tools maintenance

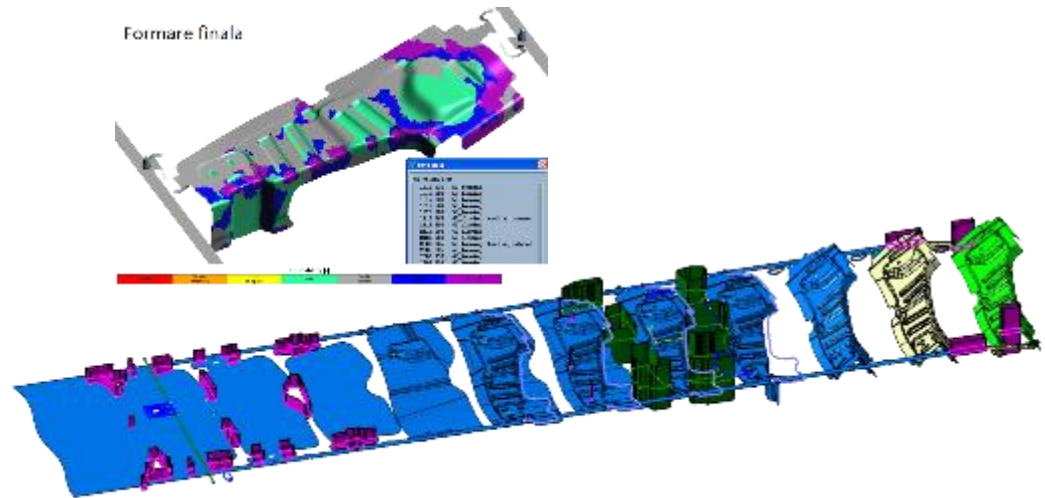


CNC Milling centers
Spark electro erosion
Wire electro erosion
Micro welding
Laser welding



Tools Manufacturing

- Competence in design and manufacturing of stamping, bending and cutting tools in progressive or transfer (manual/automatic) technology up to 3000x1200x650 mm and 10 tons
- Complete loop from PRE DESIGN (Product development support, Feasibility studies and Process simulation), DESIGN & MANUFACTURING (design of dies, fixtures & 3D control gauge, manufacturing of prototypes if necessary, final manufacturing of tools) upto TOOL VALIDATION (tool try out, part inspection , tool optimization and follow up and maintenance during life time).



SYSTEMS & ASSEMBLIES





GIC & GJM AUTOMOTIVE COMPLETE SYSTEMS SRL Pitesti, Campulung, ROMANIA

Electrical wire harness assemblies: Doors modules, airbag cables, small modules





AUTOMOTIVE COMPLETE SYSTEMS SRL

Campulung, ROMANIA

Retractable luggage rails assembly and safety nets



Luggage safety nets



Retractable luggage covers



SC EUROTEHNIC INDUSTRIES SRL

LASER AMADA



ABKANT AMADA







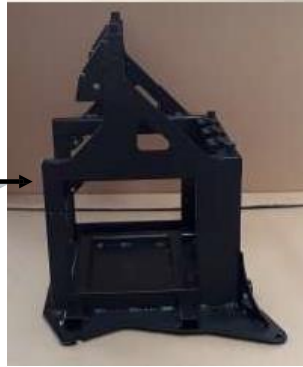












Thank you!