

SOMIGROUP

SP SOMIPRESS

SP SOMIPRESS
ROMANIA

SP SOMIPRESS
NINGBO SOMIPRESS TRADING CO. LTD.
宁波索米普莱斯贸易有限公司

 SOMIDESIGN



SOMIPRESS = ALUMINUM DIE CASTING

- More than 50 years of die cast experience
- It has always operated in the aluminum die casting sector
- It supplies high-quality die-cast aluminum parts for the automotive, household appliance and mechanical industries
- Besides the die casting process, we are also specialized in surface treatments, machining, assembling and final check operations which enable us to meet the highest qualitative expectations
- All the work is carried out with the help of machinery equipped with the highest technological systems

HISTORY

Focus on custom solutions



1972:
Founded in Italy by Armando Elisei and other associates



1996:
Obtain the first ISO9001 certification



2001:
Somipress Romania was established



2007:
New Trading Company in China



2017:
Enlarging the production capacity for the Romanian plant

1988:
Focus on European Market for Home Appliance and Automotive Sector



2000:
Expansion with a new design and production unit: SOMIDESIGN in Italy



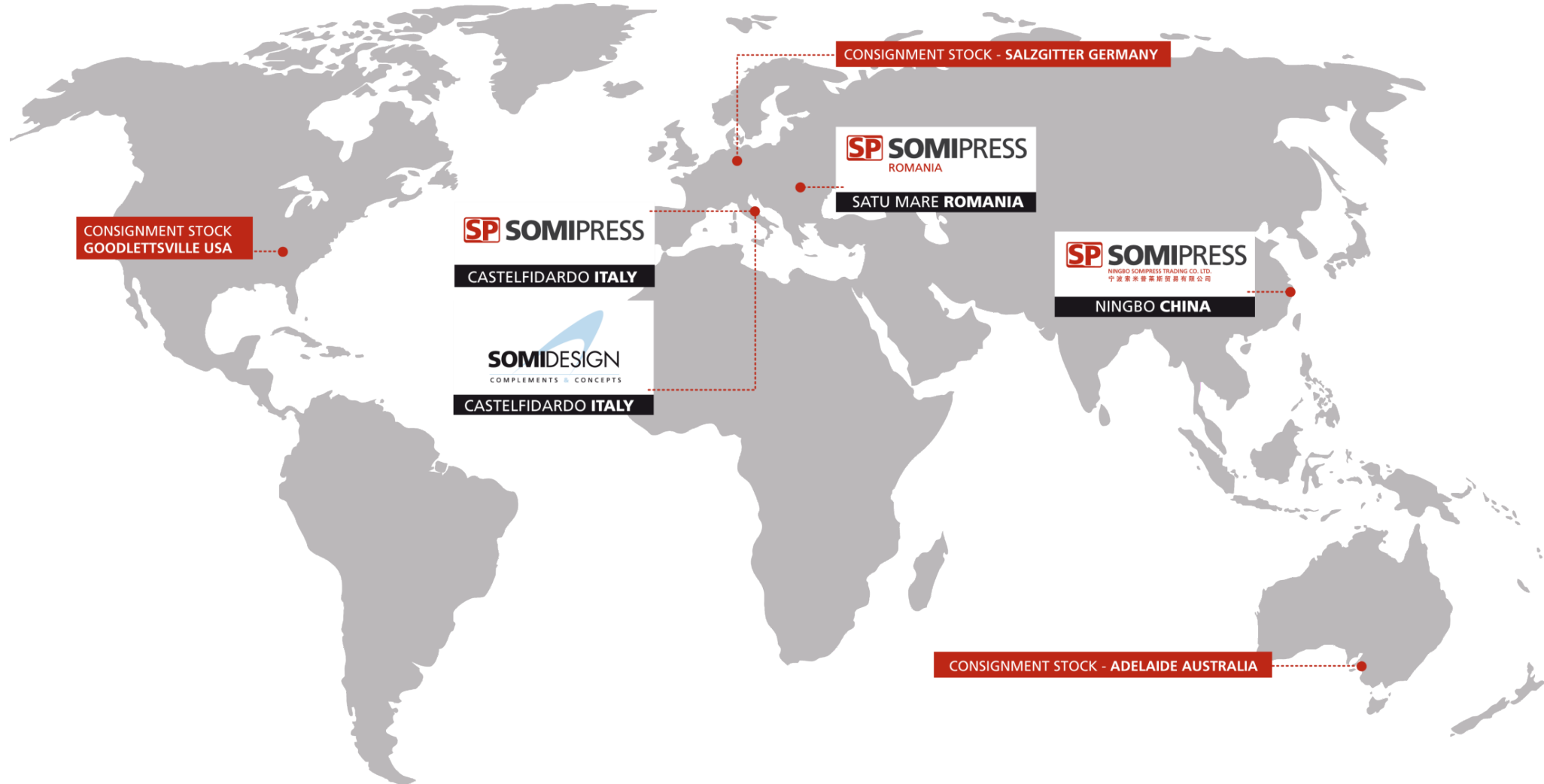
2004:
Entering New markets: Americas, Australia & China



2008:
ISO TS 16949



From SOMIPRESS to SOMIGROUP, for a global presence



WE ARE SOMIGROUP

- 4 Companies
- 168 Employees



SOMIPRESS Headquarter

Location:

Castelfidardo

ANCONA (ITALY)



Total area: 11,800 m²

Covered area: 5,800 m²



SOMIDESIGN

Location:

Castelfidardo

ANCONA (ITALY)



Total area: 4,100 m²

Covered area: 1,100 m²



SOMIPRESS ROMANIA

Location:

Satu Mare (ROMANIA)



Total area: 13,100 m²

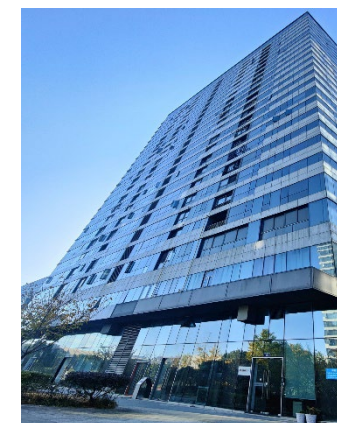
Covered area: 5,666 m²



SOMIPRESS CHINA

Location:

NINGBO (CHINA)



Offices + Warehouse: 235 m²

ENVIRONMENT AND SUSTAINABILITY




SOMIPRESS has always been attentive to the environment, both in its products and processes.

We deeply believe in the circular economy.
The main raw material it uses is 100% recyclable ALUMINUM.

In progress to join the SBTi (Science-based Targets initiative)



OUR MANAGEMENT



SOMIGROUP
Armando Elisei
President

SOMIPRESS ITALIA




Stefano Reicchi
Managing Director

SOMIDESIGN




Luca Balestra
Managing Director

SOMIPRESS ROMANIA



Lavina Filip
Managing Director

SOMI NIMBO



Jennifer Qiu
Managing Director

SP SOMIPRESS
ROMANIA

SOMIGROUP

SP SOMIPRESS

SP SOMIPRESS
ROMANIA

SP SOMIPRESS
NINGBO SOMIPRESS TRADING CO. LTD.
宁波索普贸易集团有限公司

SOMIDESIGN

FACTS & FIGURES - Somipress Romania



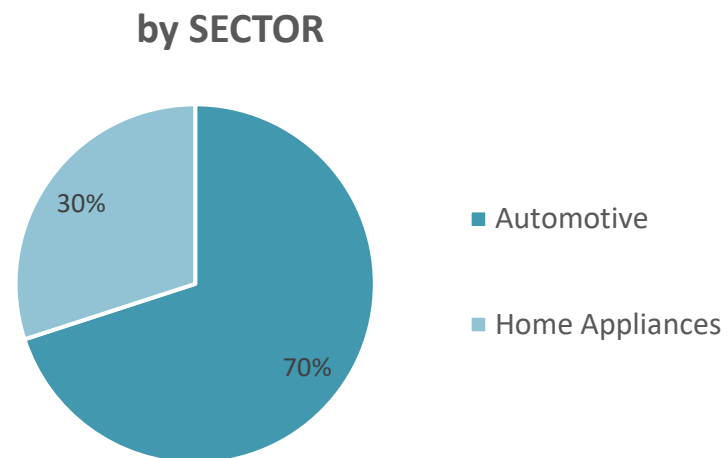
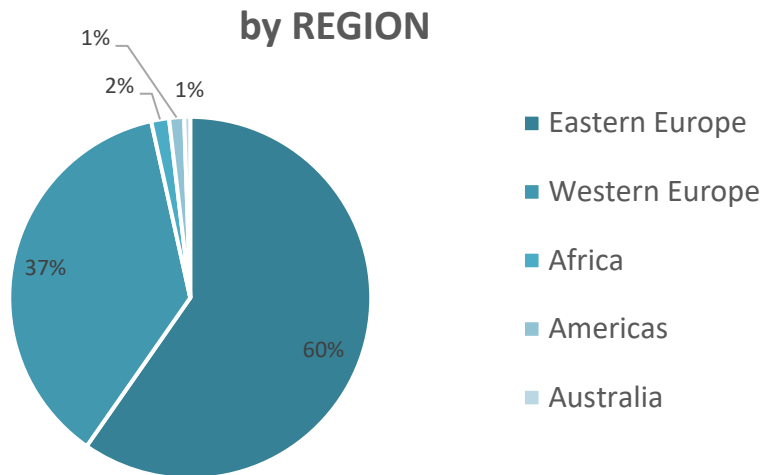
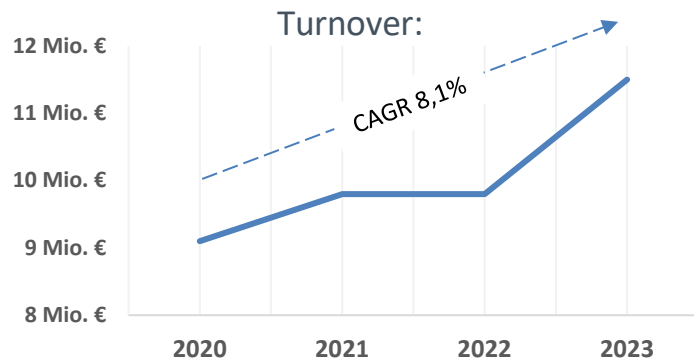
Established in 2001

Managing Director

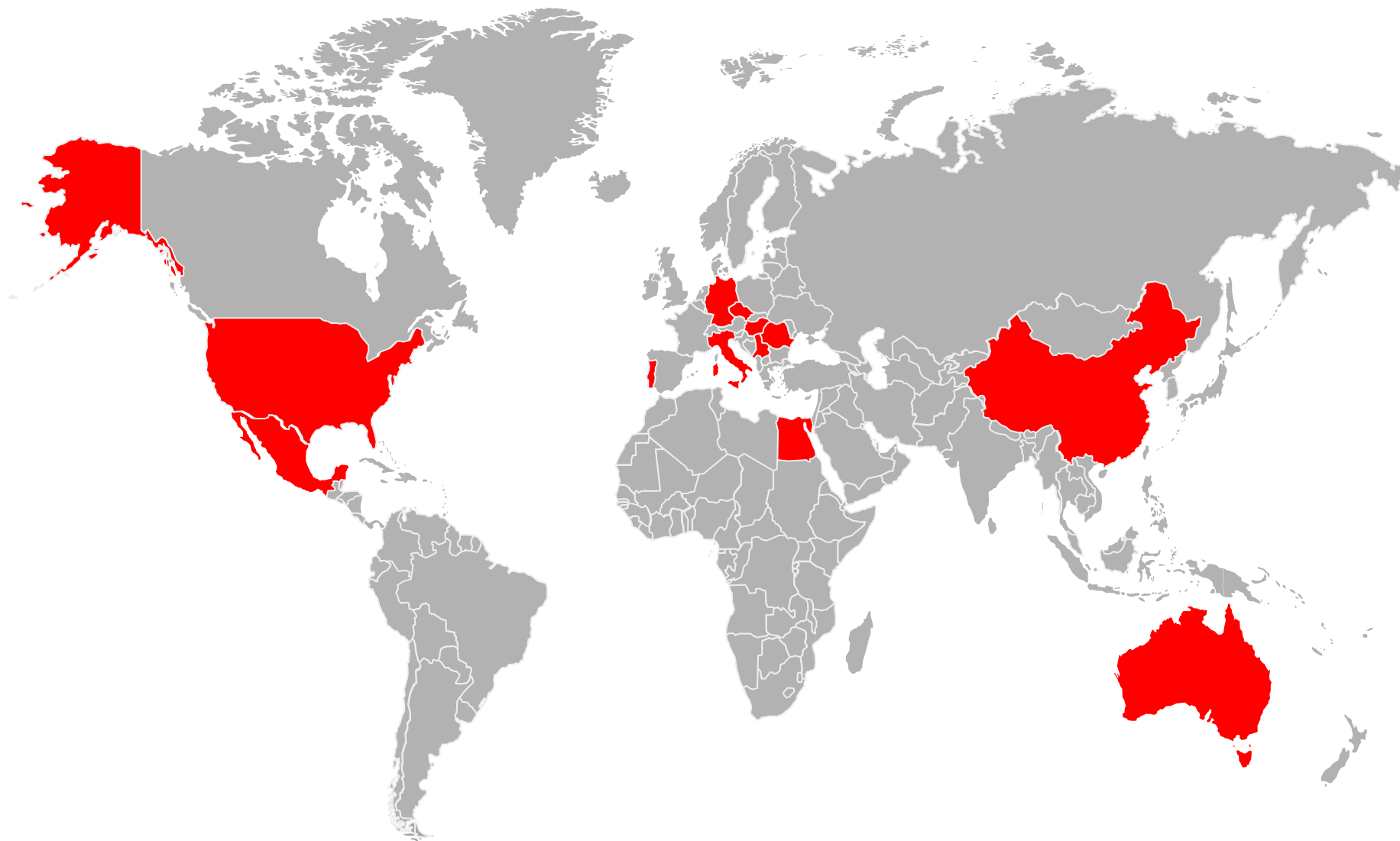


Employees:
85

Total area: 13,100 m²
Covered area: 5,666 m²



GLOBAL DELIVERIES & QUALIFIED SUPPLY CHAIN



CUSTOMERS



OUR COMPETITITIVE EDGE & MISSION

**S
T
R
E
N
G
T
H
S**



MISSION

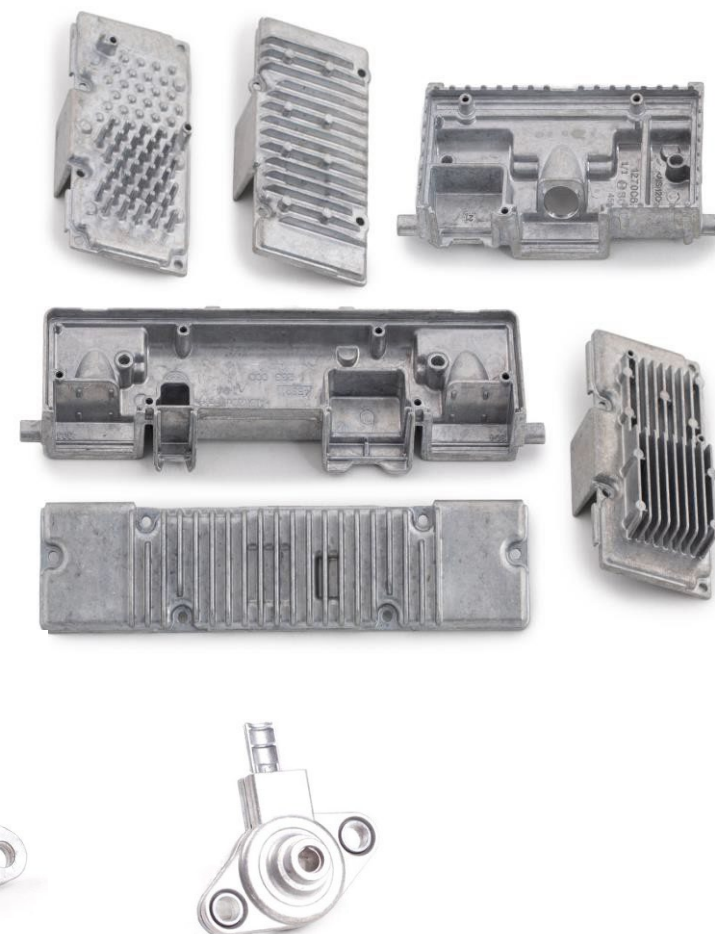
We are a partner in the aluminum die-casting industry, helping the customer reaching their goals through continuous innovation and R&D. We believe in adding value by co-designing with our customers.

OUR PRODUCT GROUPS

Heat Sinks



Housing/Cover



Our products are always characterized by innovation, quality and design

OUR PRODUCT GROUPS

Pivot & Brackets



Our products are always characterized by innovation, quality and design

Machined and/or assembled parts

OUR PRODUCT GROUPS

Gas Burner



Winch – Solar ind.



Frame – Lighting



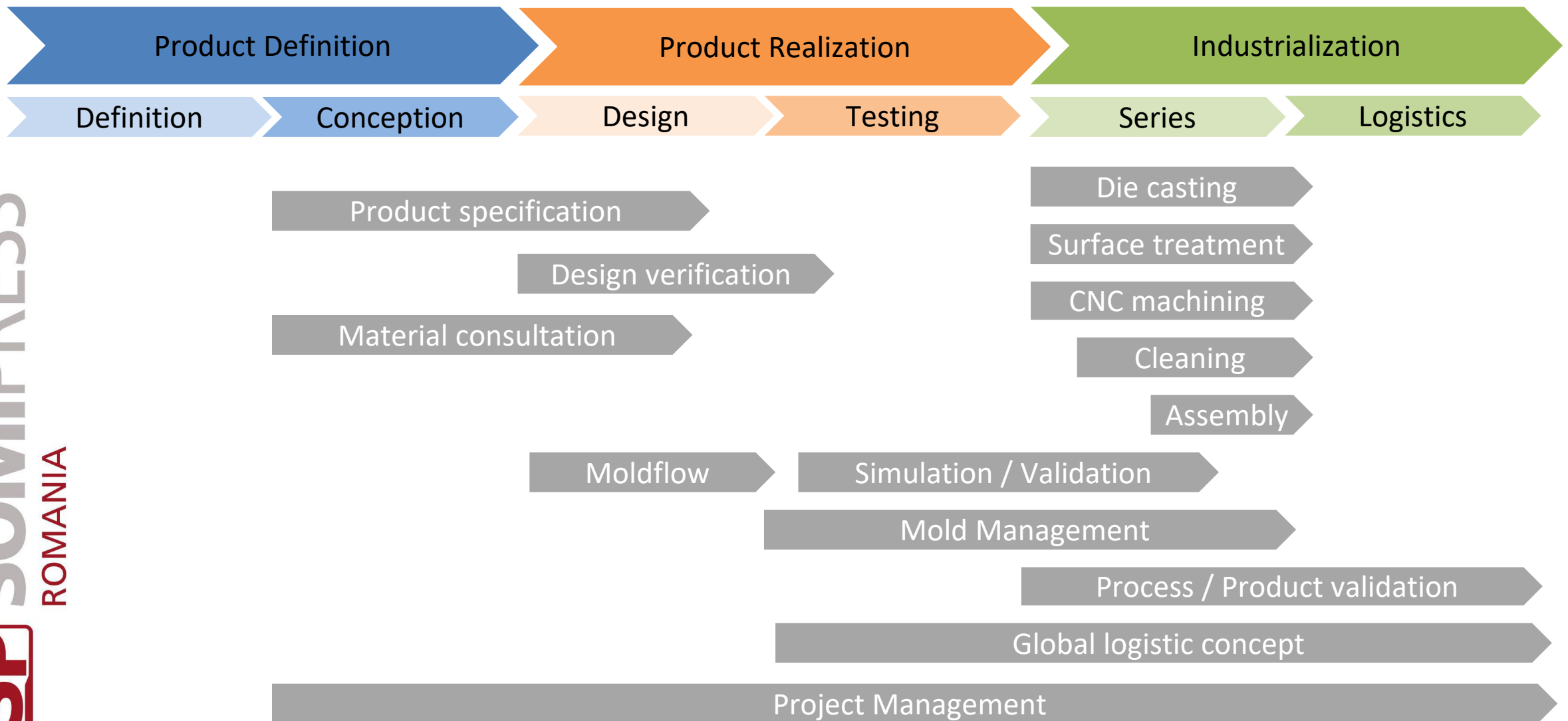
Fan



Our products are always characterized by innovation, quality and design

Powder or wet painted parts

OUR SERVICES ALONG THE PDP



OUR SERVICES

1. Simultaneous Engineering

At Somipress, the product development in co-design with the customer guides the whole process. Product development is teamwork together with engineers, we develop the basis for a high-quality and cost-efficient series production. In this process, the design and the material play a leading role.

2. Material Consultation

If you choose aluminum as an extremely strong lightweight metal, we offer optimum solutions for customers requirements with different alloys.

3. Lean Manufacturing

The optimization and rationalization of all processes, the use of an industrial automation 4.0 and of highly specialized staff ensure the highest quality, the minimum waste of energy and resources and a shared approach which always aims at efficiency and at providing highly innovative solutions.

After being die-casted, goods are machined with cutting edge equipment, which ensure a high precision level. The sand blasting and cleaning systems used make our products suitable for the automotive industry.

4. Quality Management

Every production step is monitored by our quality management team so to ensure that all product requirements are met. Starting from the quality check of the raw material to the final inspection of the end-product. Our products are also tested for leakage and, if required, they may also be provided with a laser marking.

STATE-OF-THE-ART FACILITIES



6 DIE CASTING PRESSES

FULL AUTOMIZED FROM 500 TO - 800 TO

Our state-of-the-art integrated manufacturing facilities utilize the latest machinery and technology available in the industry.

This commitment to staying at the forefront of technology ensures that the components we produce meet and exceed the highest automotive quality standards.



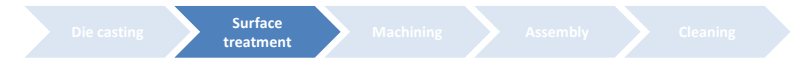
STATE-OF-THE-ART FACILITIES

Superficial treatments

2 tumbling machines with composite fragments assisted by rinsing & drying



STATE-OF-THE-ART FACILITIES



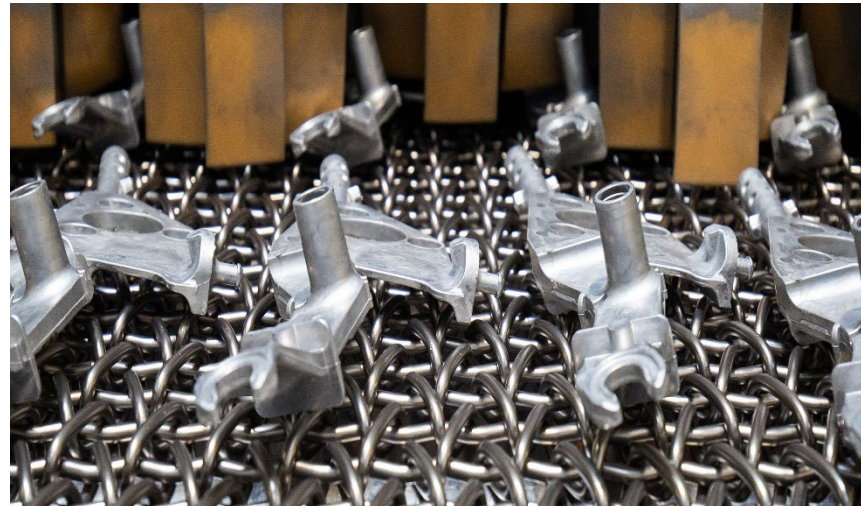
Superficial treatments

3 blasting machines



Usage of two different materials:

- Stainless steel round grains 0.3 mm
- Steel sharp grains 0.5 mm



STATE-OF-THE-ART FACILITIES



Latest automatic processes

Machining/Assembly



Testing



STATE-OF-THE-ART FACILITIES

Latest automatic processes

Machining / Washing



Integrated washing in the process



STATE-OF-THE-ART FACILITIES

Cleanliness

Special process designed to ensure a high cleanliness requirements supported by internal laboratory.



Cleanliness level: less than 400 μ



EXPERTISE

Contamination Measurements

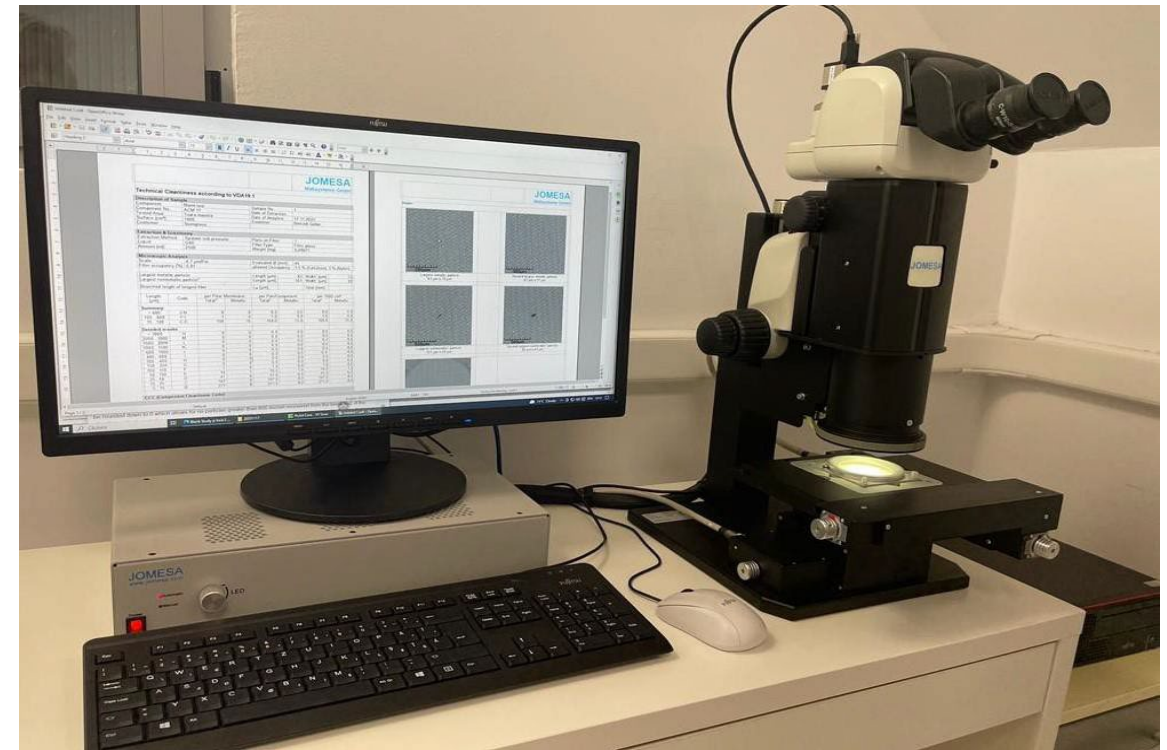
Use advanced tools for measuring contamination levels according to VDA 19 or Customer specific standards to maintain quality standards.

Particle Extractor



Microscope

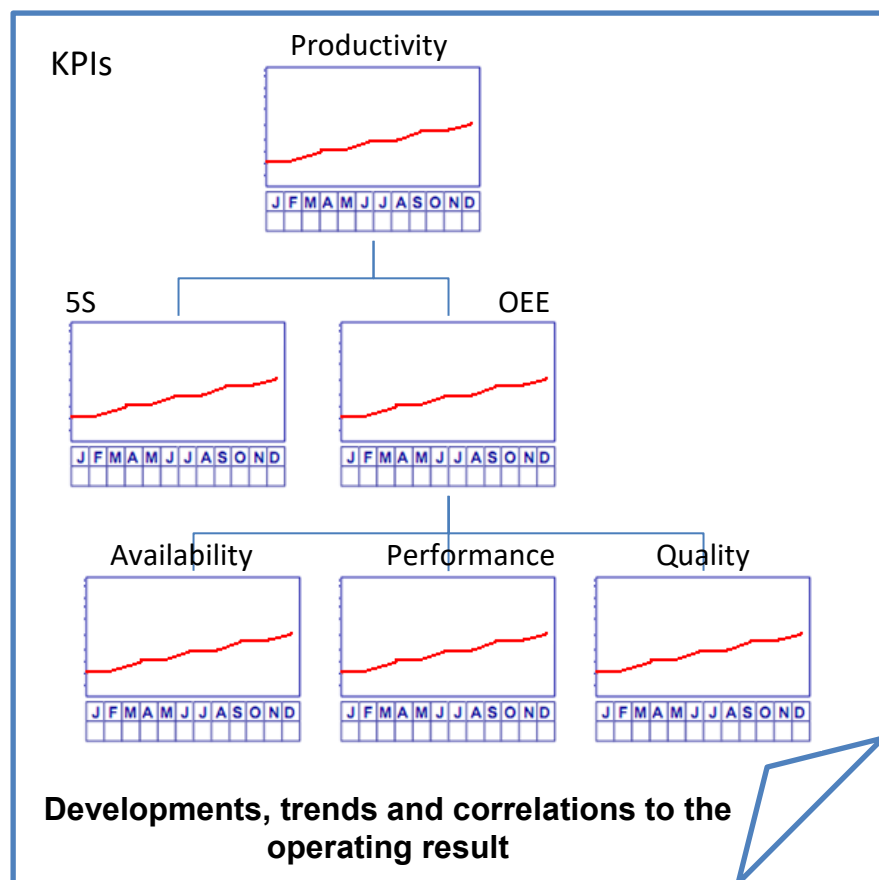
Quantify the amount/number of impurities and the type/material they come from (metallic or non-metallic)



STATE-OF-THE-ART FACILITIES

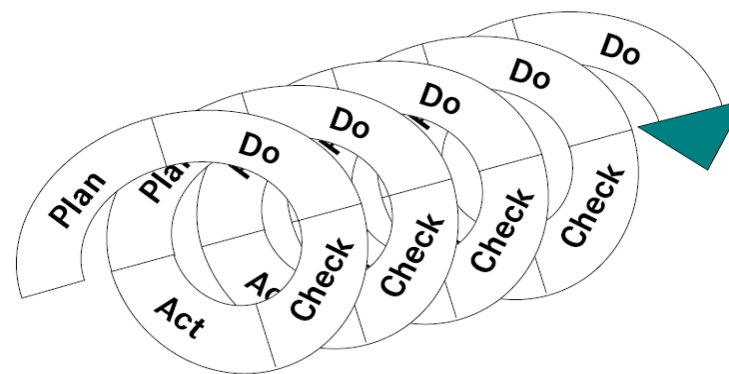
Lean Manufacturing

The permanent optimization and rationalization of all processes, the use of an industrial automation 4.0 and of highly specialized staff ensure the highest quality, the minimum waste of energy and resources and a shared approach which always aims at efficiency and at providing highly innovative solutions.



The implementation of Lean Manufacturing within the production department and all around the entire organisation gave us the opportunity to significantly improve OEE.

We are using the principles such as:
5S, Kaizen, SMED, Poka Yoke, PDCA



EXPERTISE

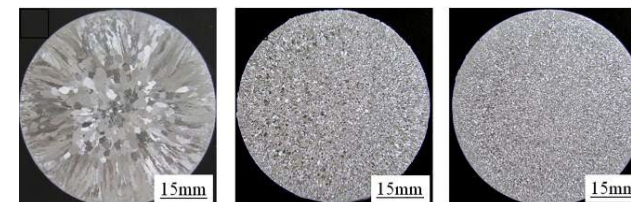
Metallographic Laboratory for raw material analysis

- We use a cutting-edge technology for the structural control of the raw material (present oxides and molecular structure).
- The studies carried out are the basis of the improvement of the process with the aim of increasing the mechanical resistance of the cast part.



A chemical analysis of the raw material is carried out on receipt and during the production process to ensure compliance with standards.

Aluminum granulometry
(aluminum structure) =>



EXPERTISE

Quality Inspection

X RAY – machine

The equipment ensures the control of the amount of air and impurities generated by oxidants introduced in the aluminium injection process. All collected data allowed us to have a close and deep analyse on the essential parts to be able to optimise the mould flow and production process.



Example of:
Aluminum granulometry + porosity



EXPERTISE

Optical Control

Utilize the latest technology for automated processes including optical control, to enhance efficiency and accuracy of processes avoiding the subjectivity.



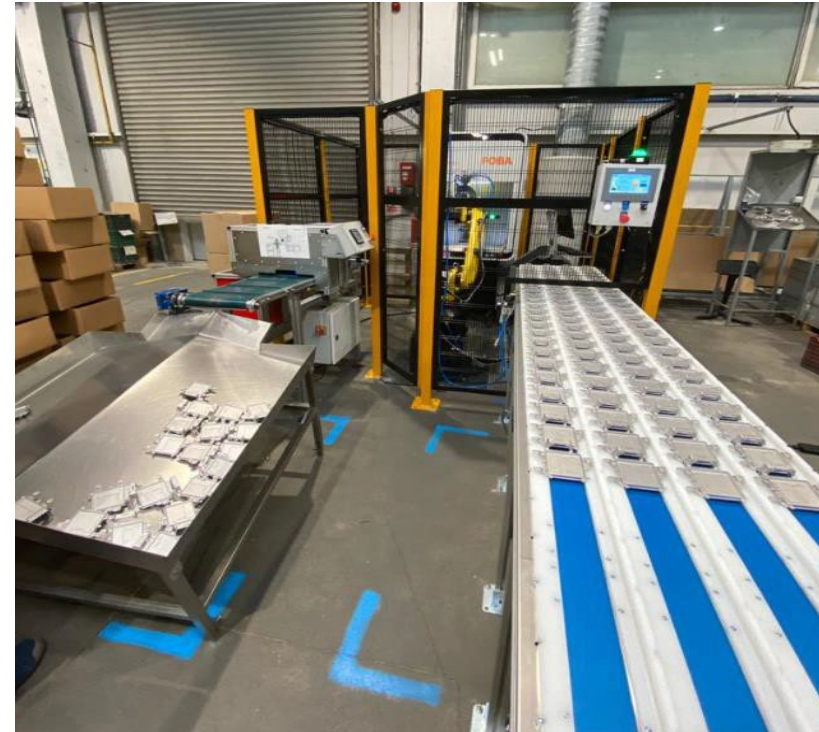
Traceability

DMC laser marking for parts traceability

Barcode: 646000000642010104060724

Length: 24

Symbology: Data Matrix



EXPERTISE

Quality Inspection

Quality instruments for high precision in measurements



2 x 3D machines

For dimensional measurements of parts with a precision of $> 3 \mu$.

Used in homologation process and occasionally in the process flow.

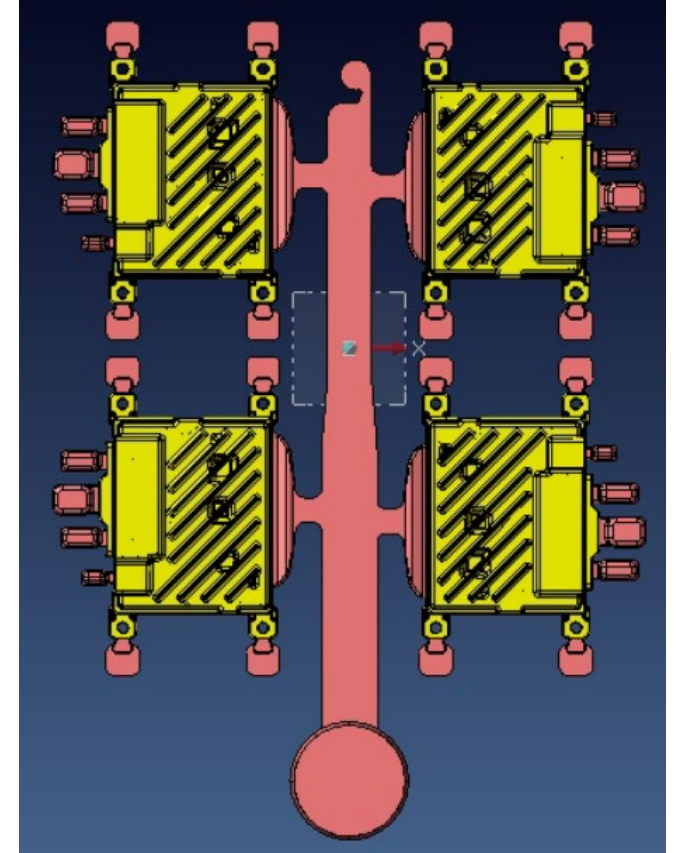
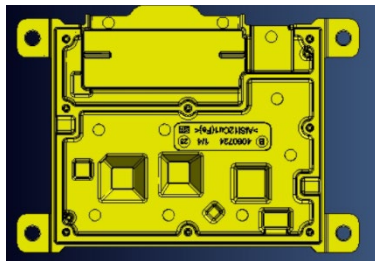
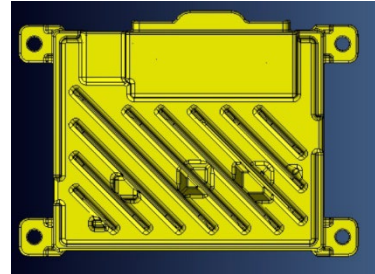
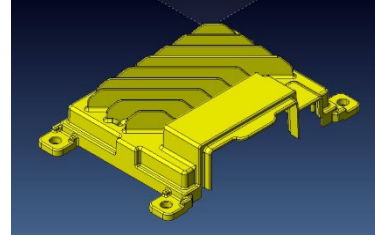


CUSTOM SOLUTIONS & INNOVATION

Cost-effective Design

We take pride in our ability to develop customized solutions that specifically address the unique needs of our clients.

By tailoring our approach to your requirements, we optimize production processes, ensuring efficiency and cost-effectiveness without compromising on quality

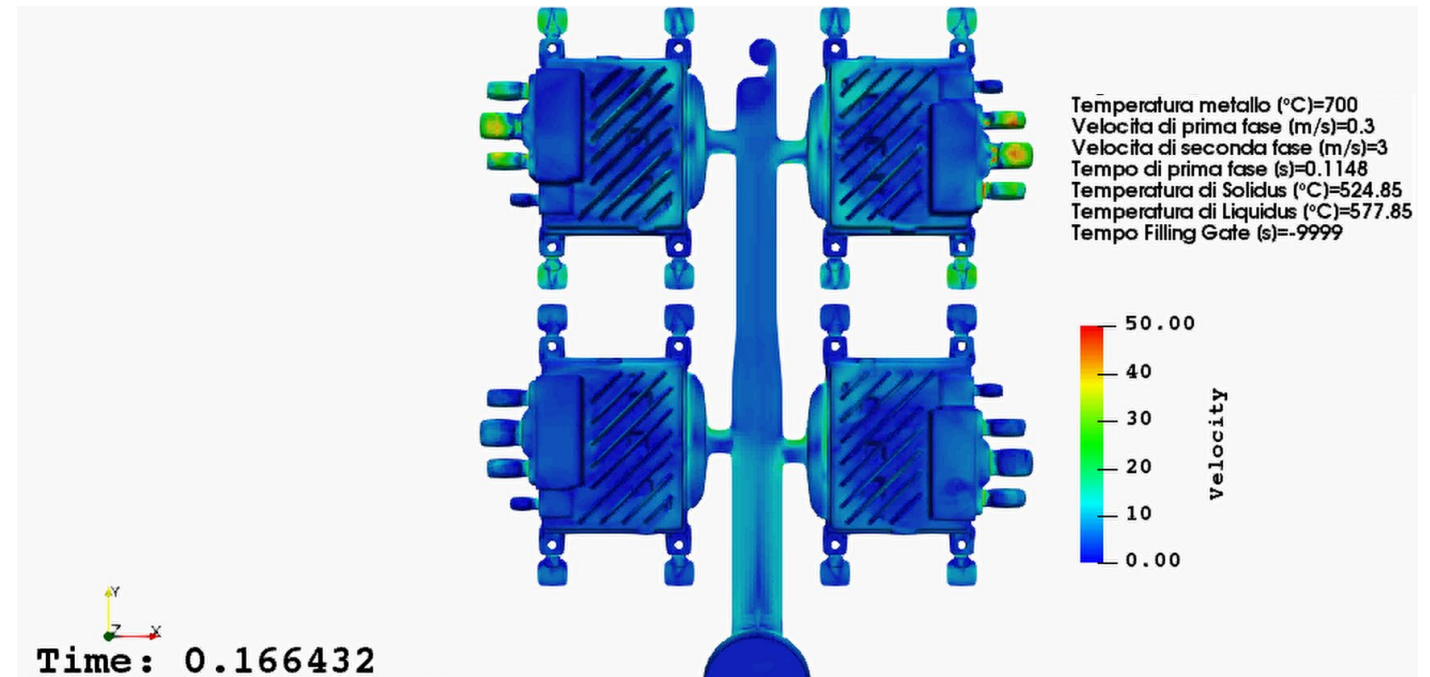


CUSTOM SOLUTIONS & INNOVATION

Cost-effective production

From conceptualization to execution, we are committed to innovation. Leveraging the latest technologies, we transform ideas into reality.

This dedication to innovation not only sets us apart but also gives our clients a competitive advantage in the rapidly evolving landscape of the automotive and related industries.



Product Realization Phase: Moldflow simulation for excellent results

CERTIFICATES

ISO 9001:2015 for Quality Management



CERTIFICATO CERTIFICATE

IGQ 2G09

Si certifica che il sistema di gestione qualità di:
We hereby certify that the quality management system operated by:

S.C. SO.M.I. Press Romania Srl

Strada Spicului, 34
440278 Satu Mare - Romania - RO

è conforme alla norma:
is in compliance with the standard:

UNI EN ISO 9001:2015

per le seguenti attività:
for the following activities:

IAF: 17

Produzione di componenti per l'industria automobilistica ed elettrodomestica pressocolati in leghe di alluminio e loro lavorazione meccanica e trattamento superficiale

Manufacture of aluminium alloys die-cast parts for domestic appliances and for the automotive industry, including machining and surface treatment

prima emissione:
first issued on: 2006-02-27
emissione corrente:
last issued on: 2024-05-29
data di scadenza:
valid until: 2027-05-28
Data ultima revisione: / Last revision date: 2024-05-29

Il Direttore
Roberto Pieroncini

IGQ - Via Giosuè Carducci 125/A - 20099 Sesto San Giovanni (MI) - Italy
www.igq.it - info@igq.it



MS N° 0001
Membro degli Accordi di Mutuo Riconoscimento EA, IAF e ILAC
Signatory of EA, IAF and ILAC Mutual Recognition Agreements

CISQ is a member of



The International Certification Network
www.iqnet-certification.com



www.igq.com

CISQ è la Federazione Italiana di Organismi di Certificazione dei sistemi di gestione aziendale. CISQ is the Italian Federation of management system Certification Bodies.

IATF 16949:2016 for AUTOMOTIVE products

CISQ AUTOMOTIVE
Consorzio di Organismi di
Certificazione Italiani dei
sistemi di gestione aziendale
accreditato IATF



CERTIFICATO CERTIFICATE

IGQ 2G09

Si certifica che il sistema di gestione qualità di:
We hereby certify that the quality management system operated by:

S.C. SO.M.I. Press Romania Srl

USI: T4FRER - Strada Spicului, 34
440278 Satu Mare - Romania - RO

è conforme alla norma e ai requisiti dello schema:
is in compliance with the standard and the scheme requirements:

IATF 16949:2016

per le seguenti attività:
for the following activities:

IAF: 17

Produzione di componenti per l'industria automobilistica pressocolati in leghe di alluminio e loro trattamento superficiale e lavorazione meccanica

Manufacture of aluminium alloys die-cast parts for the automotive industry, including surface treatment and machining

Essendo stato valutato in accordo alle "Regole per lo schema di certificazione IATF 16949 - Quinta edizione"
Having been assessed in accordance with "IATF 16949 certification scheme rules - Fifth edition"
Esclusioni ammesse/permitted exclusions par 8.3 Product Design

emissione corrente:
last issued on: 2024-05-29

data di scadenza:
valid until: 2027-05-28

IGQ
Via Giosuè Carducci 125/A
20099 Sesto San Giovanni (MI)
www.igq.it

Roberto Pieroncini
CISQ AUTOMOTIVE
Via Velleia 2 - 20900 Monza (MB)
www.cisqautomotive.it

Per informazioni sulla validità del Certificato, visitare il sito
www.iatfglobaloversight.org
*For information concerning the validity of the certificate, you
can visit the site www.iatfglobaloversight.org*



Certificato IATF N° 0519975
IATF Certificate N°

CERTIFICATE

ISO 14001: 2015 for the Environment Management



CERTIFICAT Nr. EMS-4172/R
CERTIFICATE No.

Se certifica Sistemul de Management de Mediu al / It is hereby certified that the Environmental Management System of

S.C. SOMIPRESS ROMANIA S.R.L.

STR. SPICULUI NR. 34, COD POSTAL 440278, SATU MARE, JUD. SATU MARE, ROMANIA

În următoarele unități operaționale / In the following operational units

STR. SPICULUI NR. 34, SATU MARE, JUD. SATU MARE, ROMANIA

Care este conform cu standardul / Is in compliance with the standard
ISO 14001:2015 (SR EN ISO 14001:2015)
Pentru următoarele domenii de activitate / For the following activity of activities

TURNAREA METALELOR NEFEROASE USOARE, FABRICAREA CUPTOARELOR,
FURNALELOR SI ARZATOARELOR.

CASTING OF LIGHT METALS, MANUFACTURE OF OVENS, FURNACES AND FURNACE
BURNERS.

Valabilitatea prezentei certificate este de trei ani și este condiționată de efectuarea periodică a auditurilor de supraveghere și a unei revizii complete a sistemului de management la fiecare trei ani.
The validity of this certificate is dependent on annual audits and on a complete review, every three years, of the management system.
This certificate is only valid if accompanied by the RINA document: Rules for the Certification of Occupational Health and Safety Management Systems

Prima Emisiune / First Issue	25.11.2019	Rosario Distefano
Data actualizării / Revision date	19.09.2024	Certification Europe Region, Senior Director
Data scadenței / Expiry Date	27.09.2027	RINA SIMTEX-O.C. S.R.L. - Administrator
Data deciziei de recertificare / Renewal decision date	19.09.2024	<i>Rosario Distefano</i>

RINA SIMTEX-O.C. S.R.L.
Societate independentă, Nr. 3/34,
Bulevardul Oficiilor, Bulking Corp B, Etaj 1,
Sector 6, București, România

CISQ este Federația Italiană de Organisme de Certificare a Sistemelor de Management.
CISO is the Italian Federation of management system Certification Bodies

Valabil până la:



CISQ is a member of



The International Certification Network
www.iqnet-certification.com



PI-01-F08/08.2022

OHSAS 45001:2018 for the Security and Safety



CERTIFICAT Nr. OHS-1119
CERTIFICATE No.

Se certifica Sistemul de Management al Sănătății și Securității Ocupaționale al
It is hereby certified that the Occupational Health and Safety Management System of

S.C. SOMIPRESS ROMANIA S.R.L.

STR. SPICULUI NR. 34, COD POSTAL 440278, SATU MARE, JUD. SATU MARE, ROMANIA

În următoarele unități operaționale / In the following operational units

STR. SPICULUI NR. 34, SATU MARE, JUD. SATU MARE, ROMANIA

Care este conform cu standardul / Is in compliance with the standard
ISO 45001:2018 (SR EN ISO 45001:2023)
Pentru următoarele domenii de activitate / For the following activities

TURNAREA METALELOR NEFEROASE USOARE, FABRICAREA CUPTOARELOR,
FURNALELOR SI ARZATOARELOR.

CASTING OF LIGHT METALS, MANUFACTURE OF OVENS, FURNACES AND FURNACE
BURNERS.

Utilizarea și validitatea prezentei certificate sunt supuse documentului RINA: Regulament privind Certificarea Sistemelor de Management al Sănătății și Securității Ocupaționale.
The use and validity of this certificate are subject to compliance with the RINA document: Rules for the Certification of Occupational Health and Safety Management Systems
Validitatea prezentei certificate depinde de auditurile de supraveghere periodice anuale / semestriale și reexaminatele complete a sistemului de management la trei ani.
The validity of this certificate is dependent on an annual / six monthly audit and on a complete review, every three years, of the management system

Prima Emisiune / First Issue	25.11.2019	Rosario Distefano
Data actualizării / Revision date	19.09.2024	Certification Europe Region, Senior Director
Data scadenței / Expiry Date	27.09.2027	RINA SIMTEX-O.C. S.R.L. - Administrator
Data deciziei de recertificare / Renewal decision date	19.09.2024	<i>Rosario Distefano</i>

RINA SIMTEX-O.C. S.R.L.
Societate independentă, Nr. 3/34,
Bulevardul Oficiilor Building Corp B, Etaj 1,
Sector 6, București, România

CISQ is a member of



The International Certification Network
www.iqnet-certification.com



PI-01-F08/08.2022

CONTACT DETAILS



Klaus Schwebel
Business Development

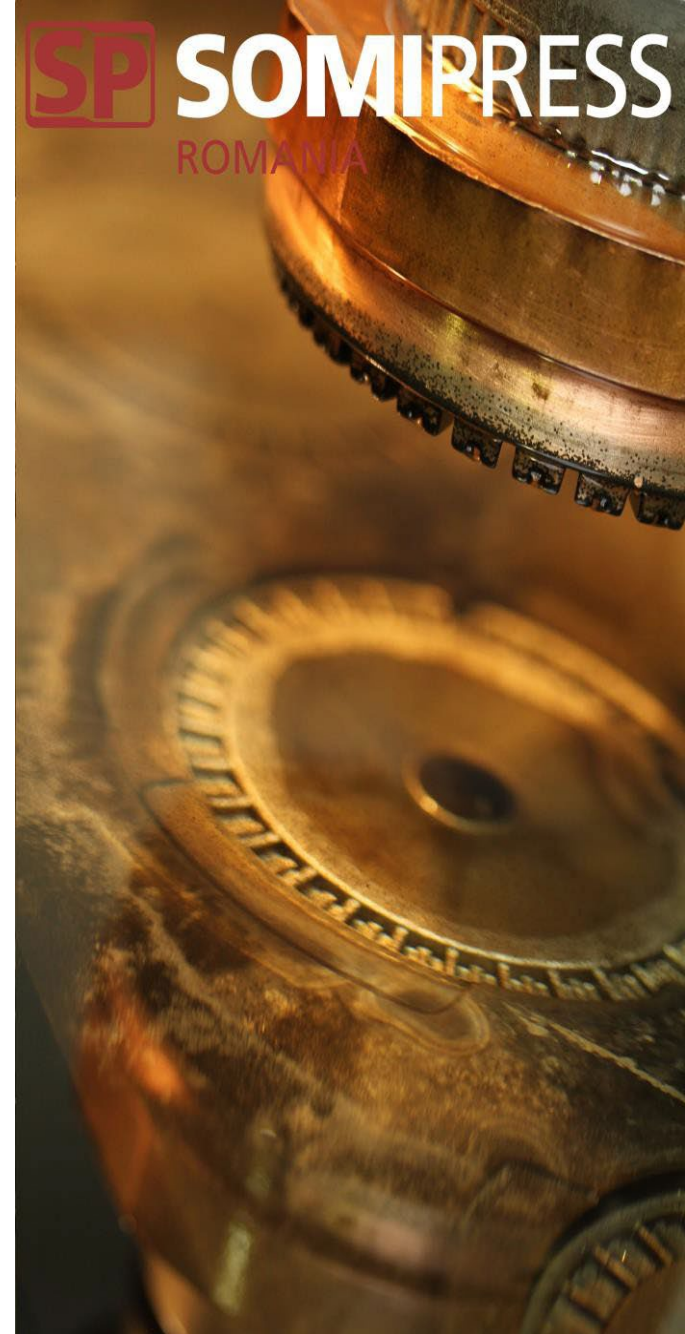
Tel: +49 177 6444 158
k.schwebel@somipress.com



Magnus Backlund
Business Development

Tel: +49 175 4352 573
m.backlund@somipress.com

Somipress Romania SRL
Strada Spicului 34
440278 Satu Mare
Romania
Tel: +40 261 770 266
www.somipress.com



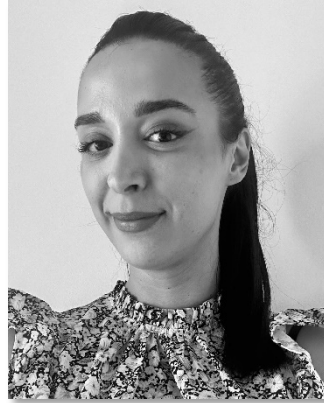
CONTACT DETAILS



Adrian Molnar
Project Management

Tel :+40 (0)261 770 377
Mob:+40 (0)730013072
a.molnar@somipress.com

Somipress Romania SRL
Strada Spicului 34
440278 Satu Mare
Romania
Tel: +40 261 770 266
www.somipress.com



Bianca Opris
Key Account Specialist

Tel :+40 (0)261 770 377
Mob:+40 (0)747030065
comercial@somipress.com

